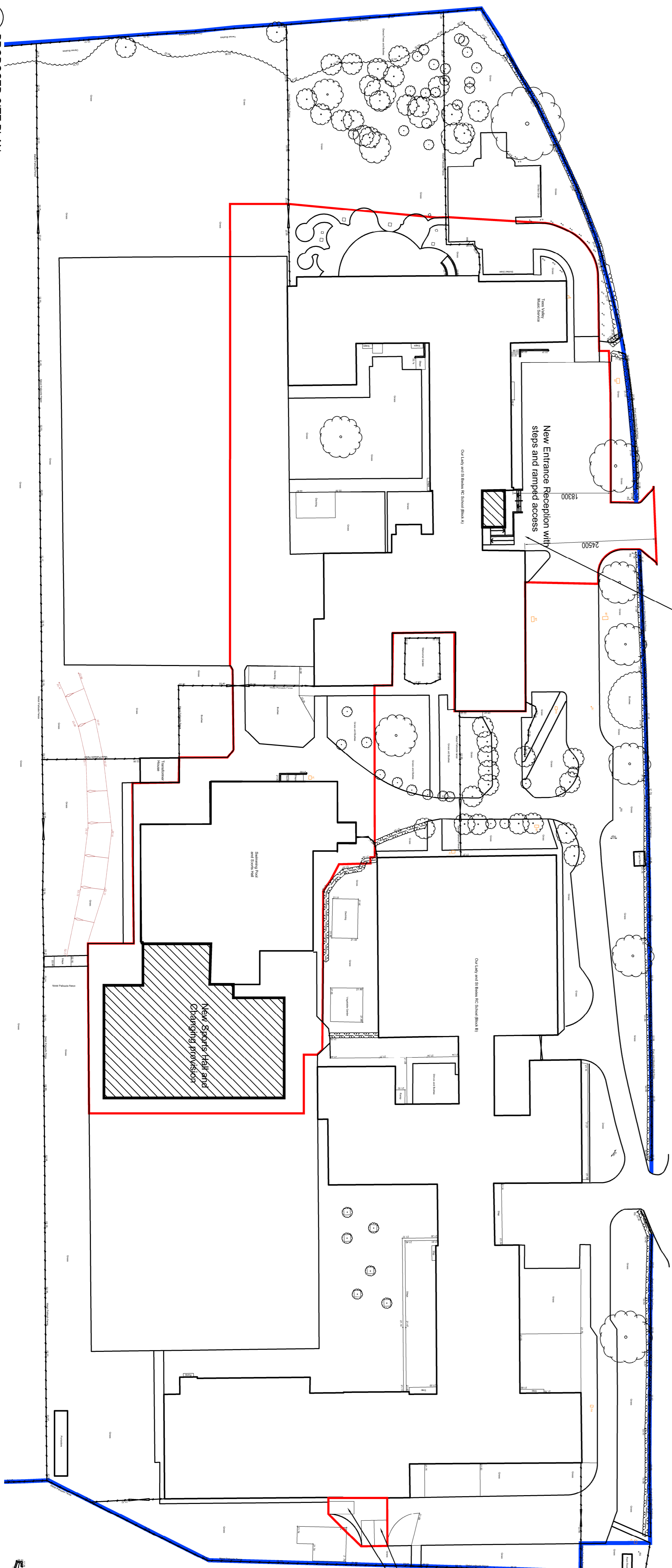
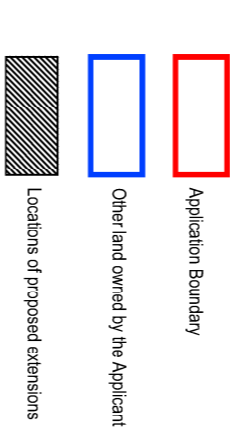
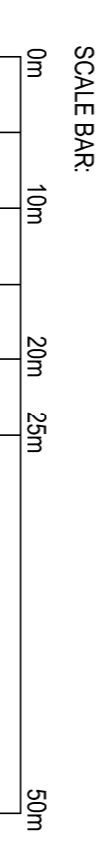


01 EXISTING SITE PLAN
Scale: 1:500

Note: Parking bays removed while forming Main Entrance



02 PROPOSED SITE PLAN
Scale: 1:500



| Rev | Description | Dm | CHK | Date |
|-----|---|----|-----|------------|
| P3 | Replacement parking bays indicated to replace bays removed at Main Entrance | RA | PSS | 11/02/2018 |
| P2 | Proposed building marked for clarity | EB | RA | 12/02/2018 |
| P1 | Issued for Planning | PC | RA | 17/02/2018 |

HOWARTH LITCHEFIELD
4 Old East, Durney, Don't Hill, Totonard (0114) 264470 E: hlit@hlf.com
16-26 Newark Street, London, EC1V 3PS T: (020) 75189905 E: hlit@hlf.com
www.howarthlitchefield.co.uk

Copyright and all intellectual property rights remain reserved to Howarth Litcheield Partnership Limited
© Howarth Litcheield Partnership Limited. All rights reserved. No part of this document may be reproduced without the prior written permission of Howarth Litcheield Partnership Limited.
Drawing Status: INFORMATION TENDER CONSTRUCTION APPROVAL

Stockton-on-Tees
BOROUGH COUNCIL
Big plans, bright future

Economic Growth & Development Services
Director of Economic Growth & Development
Richard Macdonald B Eng, C Eng, F C I E, F I C E, F I C E, F I C E
The Old Rectory, 209-211, High Street, Stockton-on-Tees, TS11 1JL
Tel: 01642 209390 Email: rmacdonald@stockton.gov.uk

Sports Hall and Entrance Area
Our Lady & St. Bede Catholic Academy
Stockton, TS19 0QH

Content: **Site Plan - Existing and Proposed**

| Date | Drawn By | Checked By | Scale | Rev |
|------------|----------|------------|------------|-----|
| 08/08/2018 | EA | RA | 1:500 @ A1 | P3 |